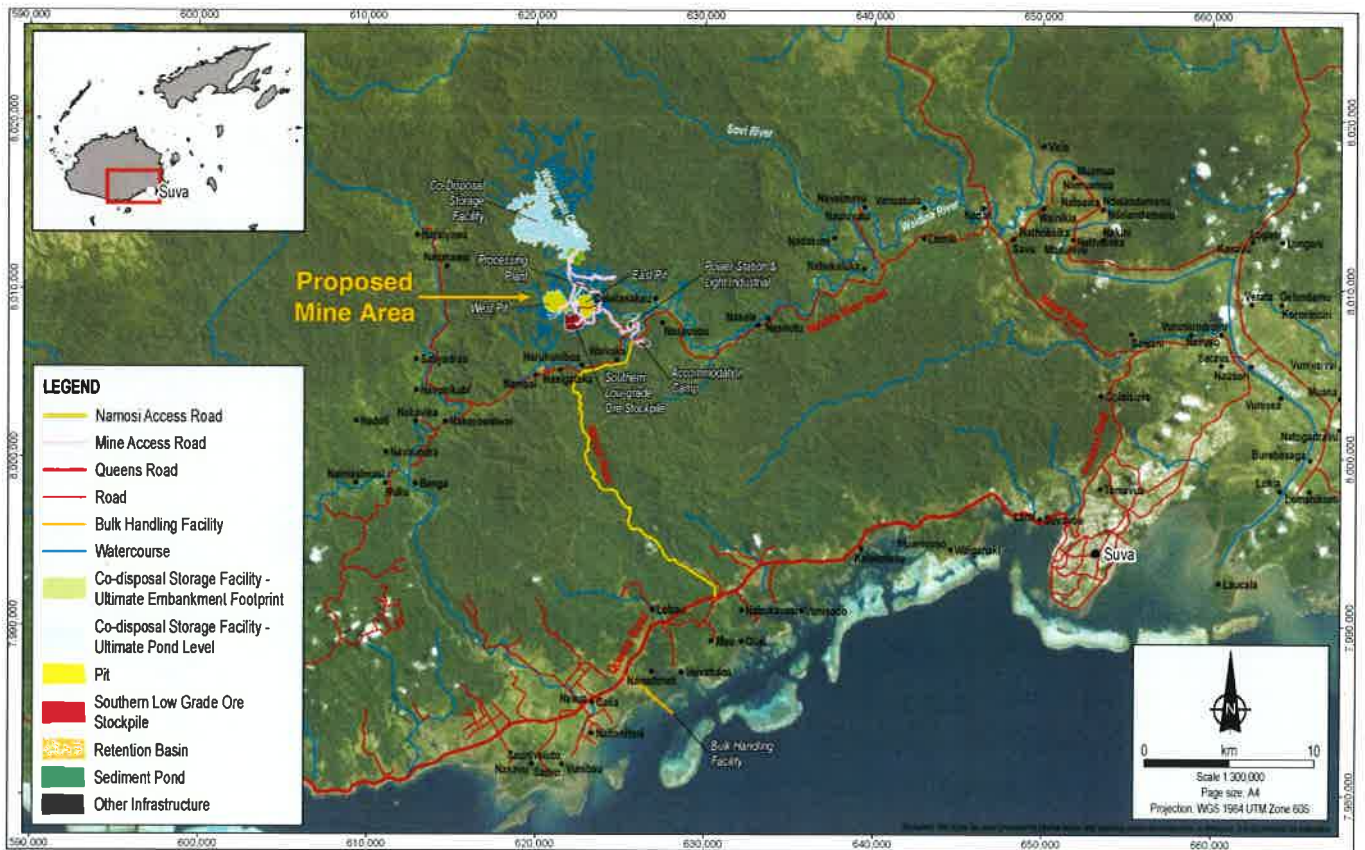


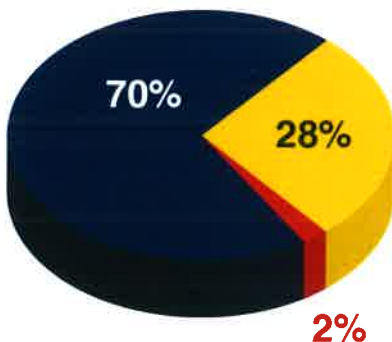
The Waisoi Project

The Waisoi Project is a copper project in the exploration and feasibility studies phase situated in the Namosi and Naitasiri provinces. Studies are being done to see if a proposed mine could be developed at Waisoi.



What is Namosi Joint Venture (NJV)?

The Waisoi Project is operated by NJV on behalf of three companies working together.



Newcrest Mining Limited
is one of the world's largest gold mining companies with operating assets in four countries.



Mitsubishi Materials Corporation
is a Japanese materials company working in many countries.



Nittetsu Mining Co., Ltd
is a Japanese mining company that deals in both metal and non-metal mineral resources currently working in Fiji, Chile and Mali.



